

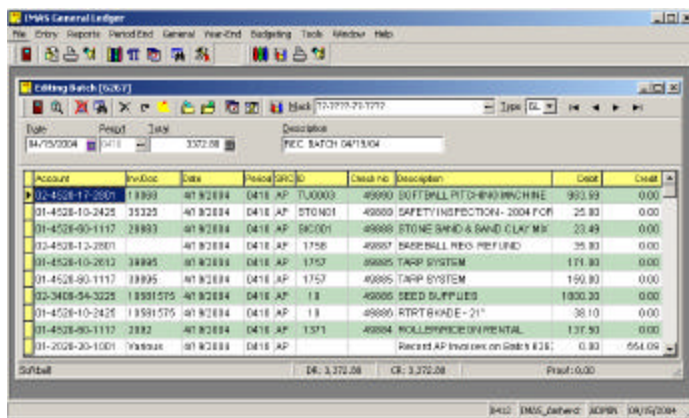


IMAS Works General Ledger

The IMAS Works General Ledger module manages the budgetary and reporting needs of any municipality, school district or non-profit agency.

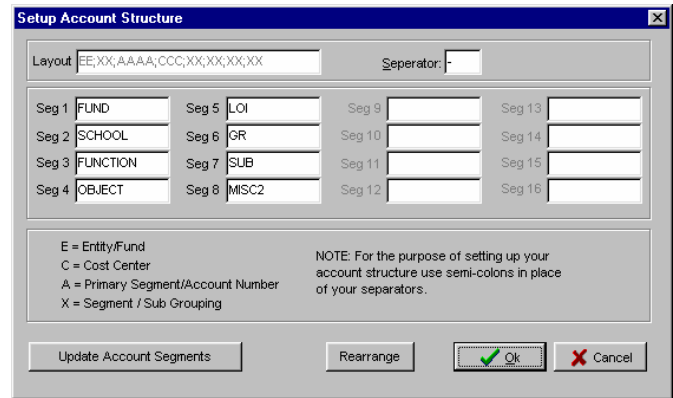
FLEXIBLE SETUP

- User-defined account structure handles up to 40 digit account number, with as many as 16 different segments.
- The user may define each account segment. When account numbers are added, the user may select segments from the descriptive list, for ease and accuracy in account setup.

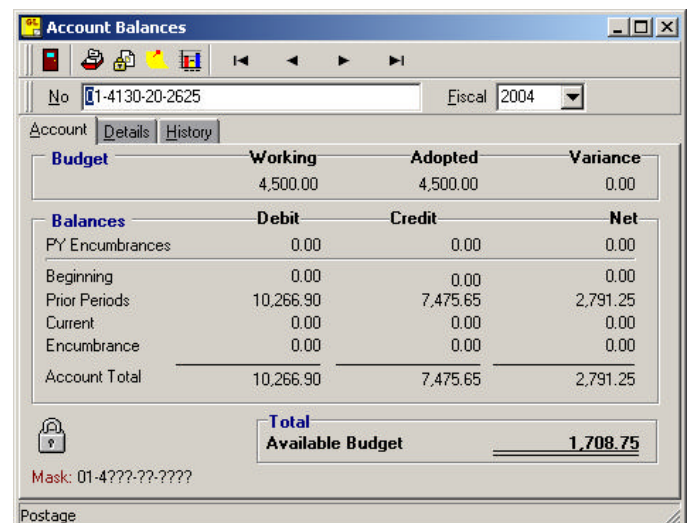


COMPREHENSIVE ACCOUNTING FUNCTIONS

- Batch journal entry allows the posting of detailed transactions that occur regularly by simply recalling a previous batch and making necessary modifications.
- Batches may be created for posting to the General Ledger, entry of encumbrances, or detailed modifications to the working budget. Reversing Batches feature also available.
- Creates Due to/from Balancing Batches
- The system maintains a “perpetual” ledger, meaning transactions may be posted to a prior period after the period has been “closed”. This also allows for entries into the new fiscal year adjusting entries have been completed for a prior year.

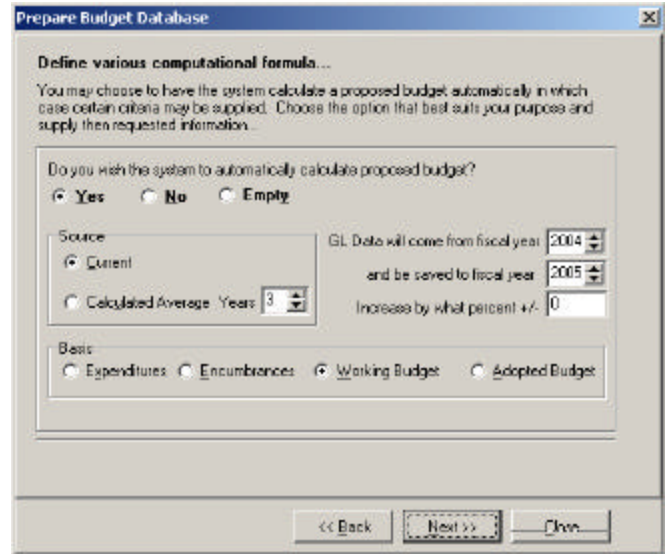


- Year-end close procedures provide the option to transfer encumbrances to the working budget for the new year. All year-end closing entries are written to a batch, which may be edited before entries are actually posted.
- View summarized detailed and historical data for any account.
- Quickly view balances and history for all accounts or selected group of accounts using “navigator” buttons at the bottom of the window (available in many IMAS Works programs).
- Complete Check Reconciliation with Load Reconciliation from file, Bulk clear, Color coded outstanding, and Reconciliation Journal.



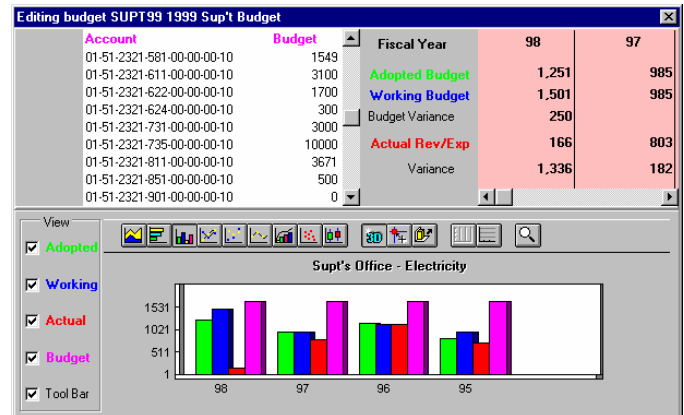
GRAPHICAL BUDGET MANAGEMENT

- Preparing a budget has never been easier! The Prepare Budget Database wizard guides you step-by-step through the creation of a budget worksheet. Each worksheet may be created to include any set of accounts you wish. A password may be used to protect each budget worksheet.
- Your new budget worksheet may be automatically calculated by the system using current working budget, adopted budget or expenditure figures currently on file. You may also calculate your budget figures based on a calculated average of expenditures over a period of years. Optionally increase budget figures by a percentage rate.
- The General Ledger contains unique budgeting capabilities, including a graphical view of budget figures for several years. New proposed budget figures are plugged in and represented on the graph as "Budget". All historical budget and actual data displayed on the screen.
- The user has complete control of the display of the graphical information, as well as what information to display in the graph.



EXTENSIVE REPORTING

- A variety of standard reports are available, including; General Ledger, detailed and formal Trial Balance, Expenditure and Revenue Reports, and Account Detail Report and many others.
- Industry-standard databases allow easy integration into any number of popular desktop applications such as Microsoft Excel, Word, and Lotus 123. The included Crystal Report Generator makes easy work of custom reporting.



OTHER STANDARD FEATURES

- IMAS Works Payroll, Accounts Payable, Purchase Orders, Fixed Assets, Accounts Receivable and Billing modules all interface directly with and update to the General Ledger.
- Pure 32-bit code: Breaks the barriers, providing the platform to take advantage of rapidly advancing technology. Programs are faster and more robust.
- Standard, familiar design to all programs makes learning easy.
- Set View allows users (workstation specific) to choose the data they wish to view on the screen with complete control of screen colors, green bar coding, etc.
- Any screen can be exported to an Excel spread sheet.

FOR MORE INFORMATION
CONTACT:



Interware Development Company, Inc.
22 Gregory Street
Mont Vernon, NH 03057
Phone: (603) 673-7155
Fax: (603) 673-2241

Email: sales@interwaredev.com
Visit our Web Site at <http://www.interwaredev.com>